

ZOOM TO READ THE INSTRUCTIONS



MEASUREMENT GUIDE

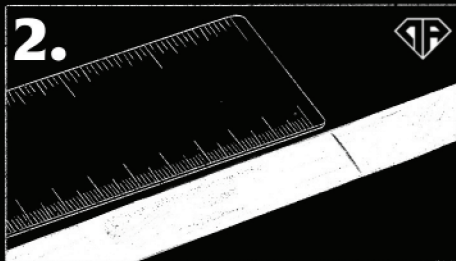
0800 DON ROUCH

GUIDE TO TAKE THE MEASURE- MENT OF YOUR RING

1. Find a piece of thread, ribbon or paper and wrap the finger in which you will use the ring. Keep in mind that it should be comfortable and not totally tight, since you will have to be able to remove the ring.

2. Write with a line the measure where the thread/tape/paper overlaps. After this, compare and check with a ruler or meter how long it is.

3. Ready! That is all. Once you have the measurement in centimeters, this will be the circumference of your finger, check at point 3 which ring measurement is closest to the circumference of your finger.



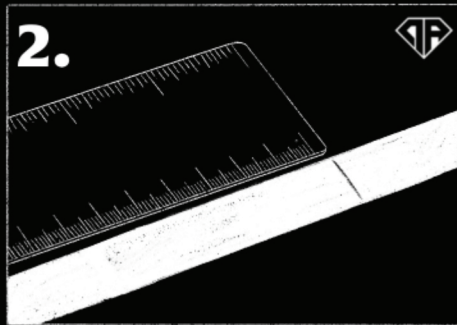
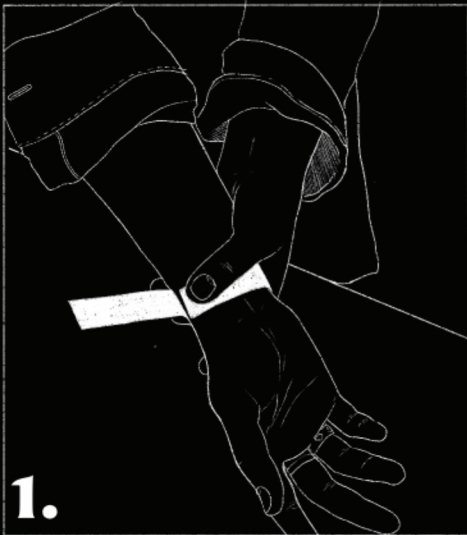
CIRCUMFERENCE	SIZE
3,9 cm	1
4,2 cm	2
4,5 cm	3
4,7 cm	4
5 cm	5
5,2 cm	6
5,4 cm	7
5,7 cm	8
6 cm	9
6,2 cm	10
6,4 cm	11
6,7 cm	12
7 cm	13
7,2 cm	14

GUIDE TO TAKE THE MEASURE- MENT OF YOUR BRACELET

1. Find a piece of thread, ribbon or paper and wrap your wrist in. Keep in mind that it should be comfortable and not totally tight.

2. Write with a line the measure where the thread/tape/paper overlaps. After this, compare and check with a ruler or meter how long it is.

3. Ready! That is all. Once you have the measurement in centimeters, this will be the circumference of your finger, check at point 3 which ring measurement is closest to the circumference of your finger.



3.

WE HAVE 3 SIZES OF BRACELETS:
15cm, 18cm and 22cm.
CHECK WHICH OF THESE AND FITS
THE MEASUREMENT OF YOUR WRIST.